

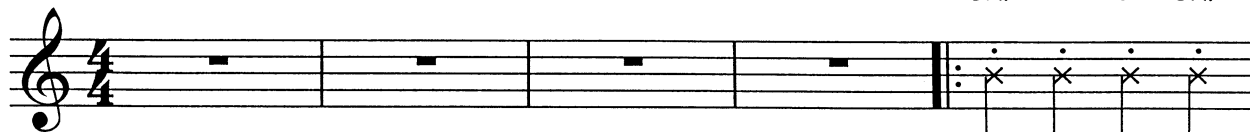
SATIN DOLL

ELLINGTON, MERCER
AND STRAYHORN

MODERATE SWING

5

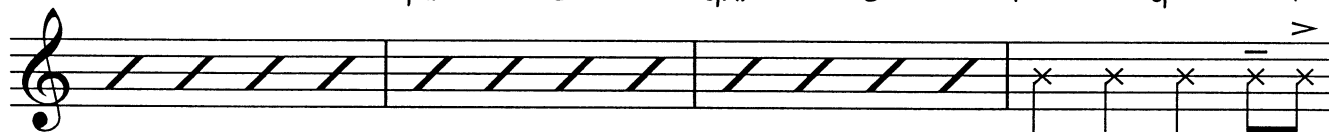
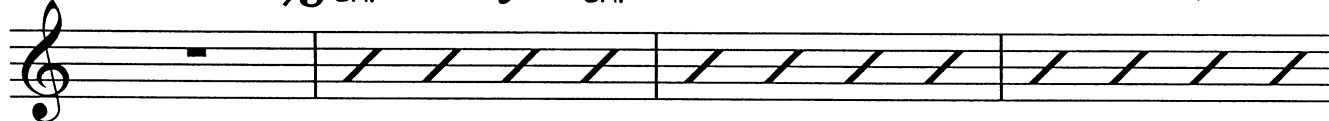
CMI7

B⁰ CMI76 F7(Δ3) F+7 DMI7 C#⁰ DMI7 G7(Δ3) G+7 GMI7(Δ5) C7(Δ9) C⁹

SIMILE



14 Bb6 GMI7 GbMI7 15 FMI7 Bb9 FMI7 Bb9 EbMA9

18 Eb6 GMI7 C⁹ GMI7 C⁹ F7(Δ3) Gb7(Δ3) F7(Δ3)22 S.CMI7 B⁰ CMI7 F7(Δ3) F+7 DMI7 G7(Δ3) DMI726 G7(Δ3) G+7 GMI7(Δ5) C7(Δ9) C⁹ GbMI7 Cb9 BbMA9

To CODA



30 DMI7 G7(Δ3) 31 CMI7 F7(Δ3) CMI7 F7(Δ3) DMI7 G7(Δ3)



mf

34 DMI7 G7(Δ3) GMI7(Δ5) C7 GbMI7 Cb9 BbMA9



38 B^b6 $Dm7$ $D^b m7$ $Cm7$ B^0 $Cm7$ $F7(13)$ $F+7$ $Dm7$ A^b9

42 G^9 $G7(13)$ $D^b m7$ $Cm7$ B^0 $Cm7$ $F7(13)$ $F+7$ $B^b MA^9$

46 B^b6 $Gm7$ $F\#m7$ 47 $Fm7$ B^b9 $Fm7$ B^b9 $E^b MA^7$

49 $F\#m7$ $Gm7$ $G^b m7$ $E^b MA^7$ $Gm7$ C^9

52 $Gm7$ C^9 $F7$ $F\#7$ $G7$ A^b7 $G7$ G^b7 $F7$ D.S AL CODA

55 CODA A^b9 G^9 C^9 $Gm7$ C^9 $G^b m7$ C^b9 $B^b MA^9$

59 A^b9 G^9 C^9

mp

61 $G^b m7$ C^b9 $B^b MA^9$ $B^b MA^9(\#11)$

p