

I. Chaconne.

Composed by
GUSTAV HOLST.

E♭ & B♭.

1

28

A

6

Musical notation for the bass line of 'The Rose Tree'. The key signature is one flat (B-flat), and the time signature is 2/4. The notation includes a treble clef, a key signature of one flat, and a time signature of 2/4. The melody consists of several measures, including a half note, a quarter note, and a half note, with a crescendo marking (*cres.*) and a forte marking (*f*).

B

16

C

24

D

roll on Cym.with Timp.sticks.

6 7 8 9 10 11 12 13 14

E

1

2

3

4

5

7

8 9 10 11 12 13 14 15 16

cres. *pppp* *a* *pppp.*

F

Maestoso.

ret. at Fine.

A single staff of music in bass clef, showing the bass line for the song. It consists of a series of eighth and sixteenth notes, some beamed together, and rests, ending with a double bar line.

Copyright 1921 in U.S.A. by Boosey & Co.
Copyright for all countries
Copyright renewed 1948

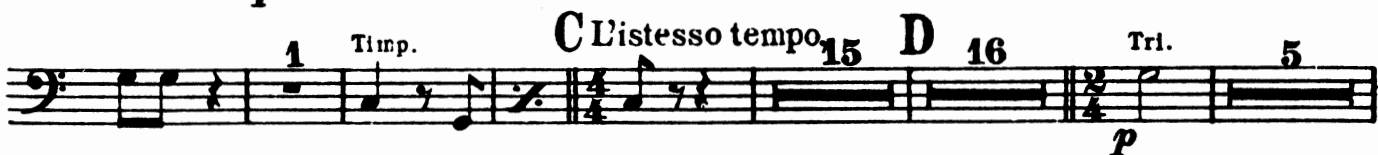


SALISBURY, S. A. AREA YOUNG MUSICIANS

II. Intermezzo.

Vivace.

C & G. Tri.



III. March.

Tempo di marcia.

Eb & Bb. 3

Musical score for Timpani and Triangle, III. March. The score is written in bass clef with a 3/4 time signature. It features various musical notations including dynamics (*ff*, *f*, *p*, *fff*), articulation (>), and performance instructions (*meno mosso.*, *Più mosso.*). The score includes measures with repeat signs and specific counts (34, 18, 12, 13, 8, 5).

If only one player, play Side Drum in March in preference to Timpani.