

B. Manilow, B. Sussman, J. Feldman

3rd Trombone

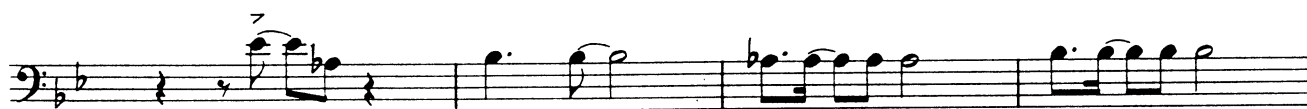
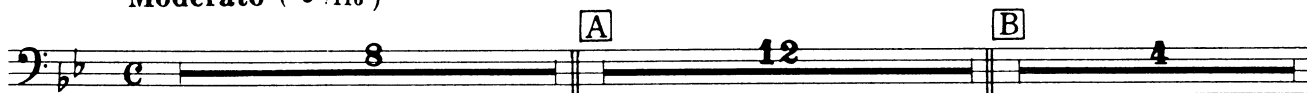
COPACABANA

Copacabana At The Cola

arr. Naohiro Iwai

Recording on / Aufnahme auf /
Enregistrement sur / Opname op :
CD 'NEW SOUNDS SPECIAL'

Moderato (♩=116)



DONATED BY THE
FRIENDS OF SALISBURY AREA
YOUNG MUSICIANS

First staff of music, bass clef, key signature of two flats. Features eighth notes with accents and triplets.

Second staff of music, bass clef, key signature of two flats. Continues the melodic line with eighth notes and triplets.

Third staff of music, bass clef, key signature of two flats. Includes measure rests of 15 and 8 measures, with box labels **F** and **G** above.

Fourth staff of music, bass clef, key signature of two flats. Starts with a forte (*f*) dynamic and features sixteenth-note patterns. Box label **H** is above the first measure.

Fifth staff of music, bass clef, key signature of two flats. Continues with sixteenth-note patterns and a forte (*f*) dynamic. Box label **I** is above the first measure.

Sixth staff of music, bass clef, key signature of two flats. Continues the melodic line with a measure rest of 2 measures.

Seventh staff of music, bass clef, key signature of two flats. Features a mezzo-forte (*mf*) dynamic and ends with a *D.S.* (Da Segno) instruction.

♢ Coda

Eighth staff of music, bass clef, key signature of two flats. Includes a crescendo hairpin and fortissimo-piano (*fp*) markings.

Ninth staff of music, bass clef, key signature of two flats. Starts with a forte (*f*) dynamic, includes a measure rest of 7 measures, and ends with fortissimo (*ff*). Box labels **J** and **K** are above.

Tenth staff of music, bass clef, key signature of two flats. Continues with eighth notes and triplets.

Eleventh staff of music, bass clef, key signature of two flats. Continues the melodic line with eighth notes and triplets.

Twelfth staff of music, bass clef, key signature of two flats. Ends with a *rit.* (ritardando) marking, a fortissimo (*ff*) dynamic, and a fermata over a whole note.