

TBN

# HARMONIC MAJOR SCALE

PLAY OVER (II/V7/I) IN MAJOR KEYS

C

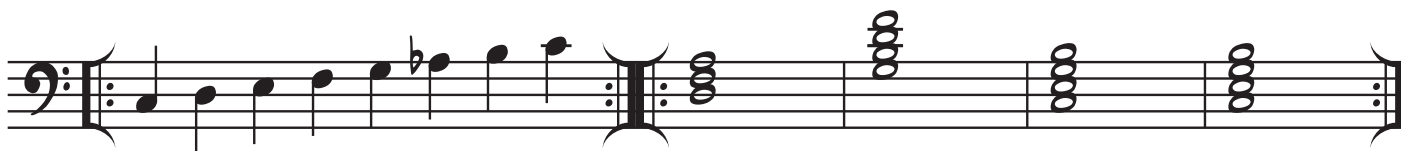
D<sup>MI</sup>

G<sup>7</sup>

C<sup>MA7</sup>

C<sup>MA7</sup>

1



B<sup>b</sup>

C<sup>MI</sup>

F<sup>7</sup>

B<sup>b</sup>MA<sup>7</sup>

B<sup>b</sup>MA<sup>7</sup>

2



A<sup>b</sup>

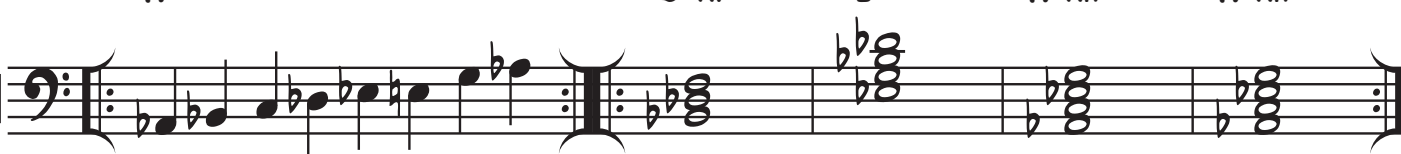
B<sup>b</sup>MI

E<sup>b</sup>7

A<sup>b</sup>MA<sup>7</sup>

A<sup>b</sup>MA<sup>7</sup>

3



G<sup>b</sup>

A<sup>b</sup>MI

D<sup>b</sup>7

G<sup>b</sup>MA<sup>7</sup>

G<sup>b</sup>MA<sup>7</sup>

4



E

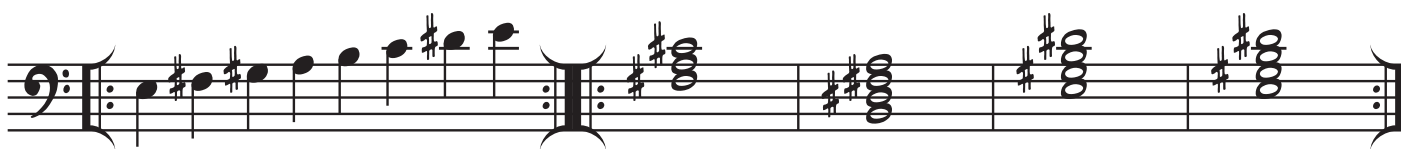
F<sup>#</sup>MI

B<sup>7</sup>

E<sup>MA7</sup>

E<sup>MA7</sup>

5



D

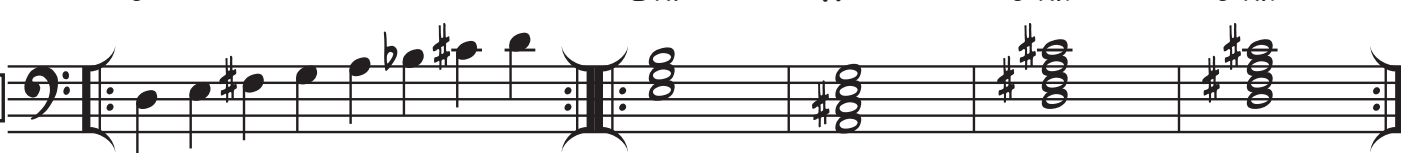
E<sup>MI</sup>

A<sup>7</sup>

D<sup>MA7</sup>

D<sup>MA7</sup>

6



## HARMONIC MAJOR SCALE

**D<sup>b</sup>** **E<sup>b</sup>MI** **A<sup>b</sup>7** **D<sup>b</sup>MA<sup>7</sup>** **D<sup>b</sup>MA<sup>7</sup>**

The first staff shows the D-flat harmonic major scale in bass clef, starting with a repeat sign. The scale notes are D<sup>b</sup>, E<sup>b</sup>, F<sup>b</sup>, G<sup>b</sup>, A<sup>b</sup>, B<sup>b</sup>, and C<sup>b</sup>. After a double bar line, four chords are shown: E<sup>b</sup>MI (E<sup>b</sup>, G<sup>b</sup>, B<sup>b</sup>), A<sup>b</sup>7 (A<sup>b</sup>, C<sup>b</sup>, E<sup>b</sup>, G<sup>b</sup>), D<sup>b</sup>MA<sup>7</sup> (D<sup>b</sup>, F<sup>b</sup>, A<sup>b</sup>, C<sup>b</sup>), and D<sup>b</sup>MA<sup>7</sup> (D<sup>b</sup>, F<sup>b</sup>, A<sup>b</sup>, C<sup>b</sup>).

**B** **C<sup>#</sup>MI** **F<sup>#</sup>7** **BMA<sup>7</sup>** **BMA<sup>7</sup>**

The second staff shows the B harmonic major scale in bass clef, starting with a repeat sign. The scale notes are B, C<sup>#</sup>, D<sup>#</sup>, E<sup>#</sup>, F<sup>#</sup>, G<sup>#</sup>, and A<sup>#</sup>. After a double bar line, four chords are shown: C<sup>#</sup>MI (C<sup>#</sup>, E<sup>#</sup>, G<sup>#</sup>), F<sup>#</sup>7 (F<sup>#</sup>, A<sup>#</sup>, C<sup>#</sup>, E<sup>#</sup>), BMA<sup>7</sup> (B, D<sup>#</sup>, F<sup>#</sup>, A<sup>#</sup>), and BMA<sup>7</sup> (B, D<sup>#</sup>, F<sup>#</sup>, A<sup>#</sup>).

**A** **BMI** **E<sup>7</sup>** **AMA<sup>7</sup>** **AMA<sup>7</sup>**

The third staff shows the A harmonic major scale in bass clef, starting with a repeat sign. The scale notes are A, B, C<sup>#</sup>, D<sup>#</sup>, E<sup>#</sup>, F<sup>#</sup>, and G<sup>#</sup>. After a double bar line, four chords are shown: BMI (B, D<sup>#</sup>, F<sup>#</sup>), E<sup>7</sup> (E<sup>#</sup>, G<sup>#</sup>, B, D<sup>#</sup>), AMA<sup>7</sup> (A, C<sup>#</sup>, E<sup>#</sup>, G<sup>#</sup>), and AMA<sup>7</sup> (A, C<sup>#</sup>, E<sup>#</sup>, G<sup>#</sup>).

**G** **AMI** **D<sup>7</sup>** **GMA<sup>7</sup>** **GMA<sup>7</sup>**

The fourth staff shows the G harmonic major scale in bass clef, starting with a repeat sign. The scale notes are G, A, B, C<sup>b</sup>, D<sup>b</sup>, E<sup>b</sup>, and F<sup>b</sup>. After a double bar line, four chords are shown: AMI (A, C<sup>b</sup>, E<sup>b</sup>), D<sup>7</sup> (D<sup>b</sup>, F<sup>b</sup>, A, C<sup>b</sup>), GMA<sup>7</sup> (G, B, D<sup>b</sup>, F<sup>b</sup>), and GMA<sup>7</sup> (G, B, D<sup>b</sup>, F<sup>b</sup>).

**F** **GMI** **C<sup>7</sup>** **FMA<sup>7</sup>** **FMA<sup>7</sup>**

The fifth staff shows the F harmonic major scale in bass clef, starting with a repeat sign. The scale notes are F, G, A, B<sup>b</sup>, C<sup>b</sup>, D<sup>b</sup>, and E<sup>b</sup>. After a double bar line, four chords are shown: GMI (G, B<sup>b</sup>, D<sup>b</sup>), C<sup>7</sup> (C<sup>b</sup>, E<sup>b</sup>, G, B<sup>b</sup>), FMA<sup>7</sup> (F, A, C<sup>b</sup>, E<sup>b</sup>), and FMA<sup>7</sup> (F, A, C<sup>b</sup>, E<sup>b</sup>).

**E<sup>b</sup>** **FMI** **B<sup>b</sup>7** **E<sup>b</sup>MA<sup>7</sup>** **E<sup>b</sup>MA<sup>7</sup>**

The sixth staff shows the E-flat harmonic major scale in bass clef, starting with a repeat sign. The scale notes are E<sup>b</sup>, F, G, A<sup>b</sup>, B<sup>b</sup>, C<sup>b</sup>, and D<sup>b</sup>. After a double bar line, four chords are shown: FMI (F, A<sup>b</sup>, C<sup>b</sup>), B<sup>b</sup>7 (B<sup>b</sup>, D<sup>b</sup>, F, A<sup>b</sup>), E<sup>b</sup>MA<sup>7</sup> (E<sup>b</sup>, G, B<sup>b</sup>, D<sup>b</sup>), and E<sup>b</sup>MA<sup>7</sup> (E<sup>b</sup>, G, B<sup>b</sup>, D<sup>b</sup>).